



Behaviour
HUBS

Introduction to Behaviour Hubs



Department
for Education



Education
Development
Trust

The Behaviour Hubs Programme

Schools are supported for one year

Available for ALL schools

The programme is fully-funded by the DfE

Schools are supported through the following journey:

- Diagnosing what could be improved
- Developing new behaviour approaches
- Launching new behaviour approaches
- Monitoring and further implementing changes

Funding and time commitment

The funding is in proportion to the time commitment expected for the programme.

Core

For schools who want to work independently

Access to training, networking, open days, and resources

Action planning session

Funding: £3K
12 to 20 days

Extended

For schools who need one-to-one support

Suitable where changes implemented in the past have not had the desired impact

Funding: £9K
30 to 40 days

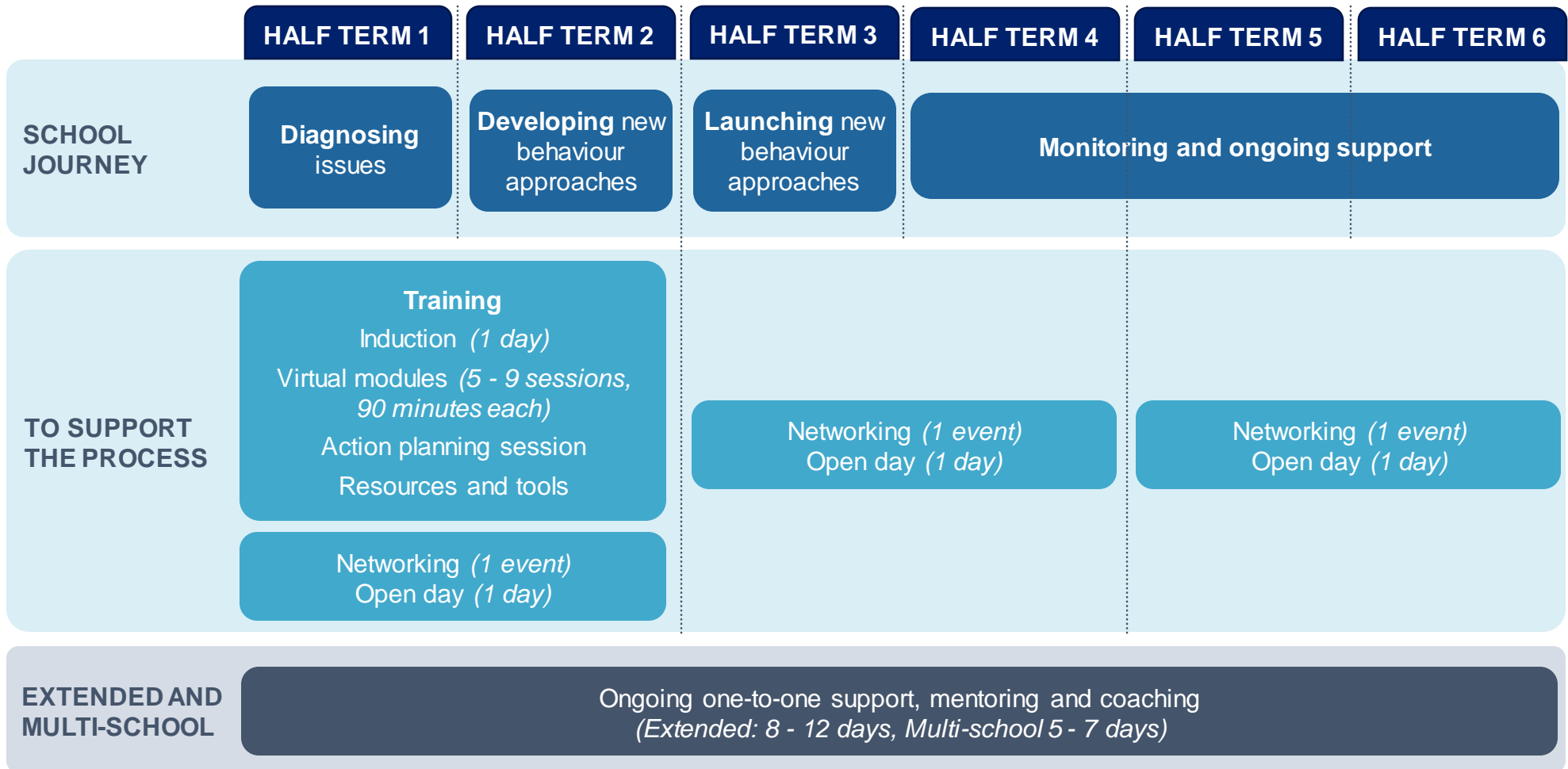
Multi-school

For MATs who would like to implement change across several schools

Includes Extended support for an RI school within the MAT

Funding: £6K*
22 to 30 days
(MAT exec)

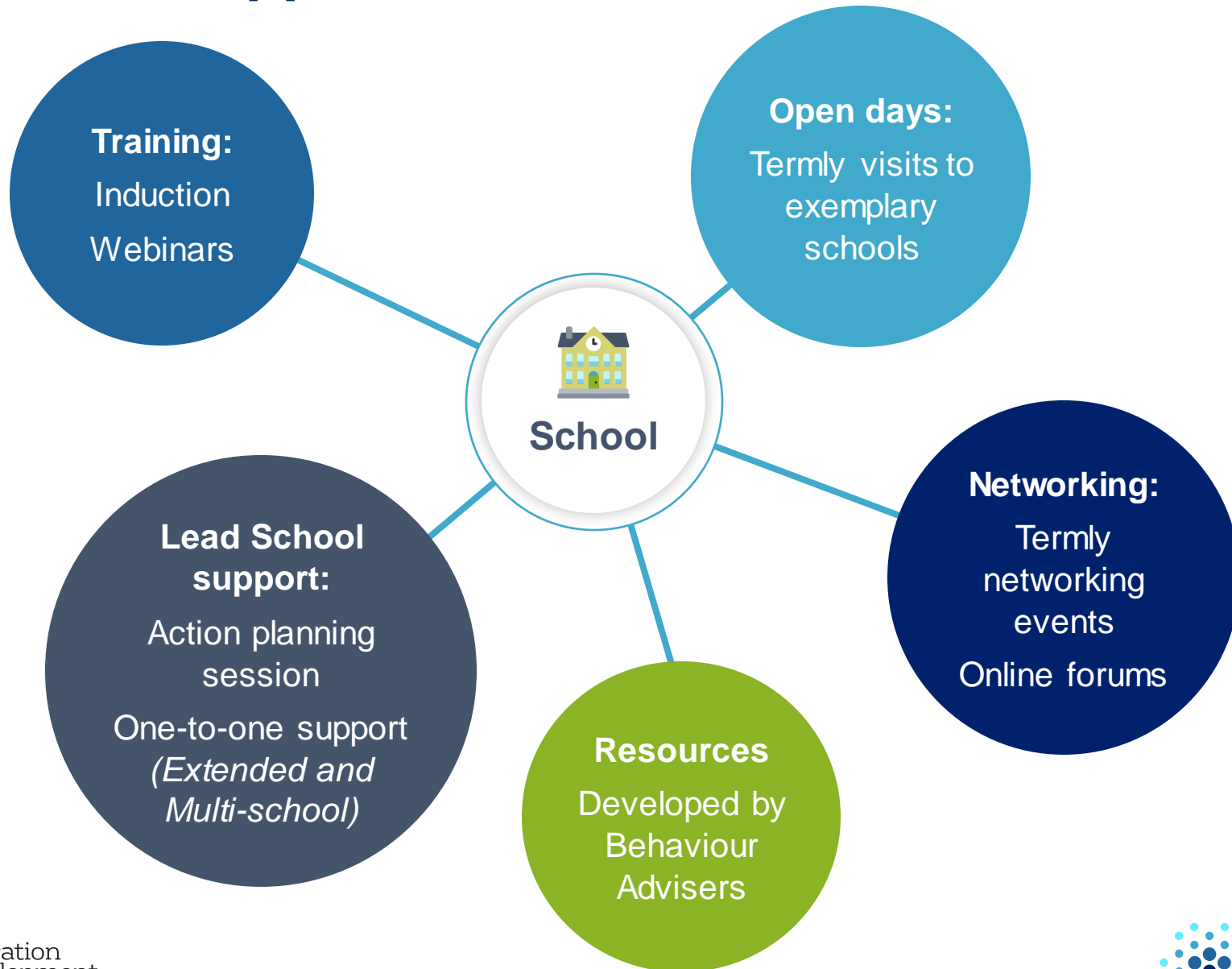
Programme structure



Programme structure

- The programme will partner your school with a local Lead School that has an exemplary school behaviour culture.
- The programme will take on a new cohort of schools each term, giving schools the option to join at a time of year which suits their need.
- Schools will be matched with a Lead School nearby and of the same phase (with a maximum travel time of 2 hours where possible).
- Schools should expect to send two members of their senior team to training sessions, networking events and open days.

Elements of support available



Benefits

Partner schools will benefit from:

- Free, bespoke support and advice for senior leaders from a Lead School or Lead MAT
- Increased staff confidence through sustained improvement in a behaviour culture that is adopted and understood by all
- Joining newly-created school hubs to share best practice

For further information



- Contact us:
behaviourhubs@educationdevelopmenttrust.com
- Website and application form:
www.gov.uk/guidance/behaviour-hubs